



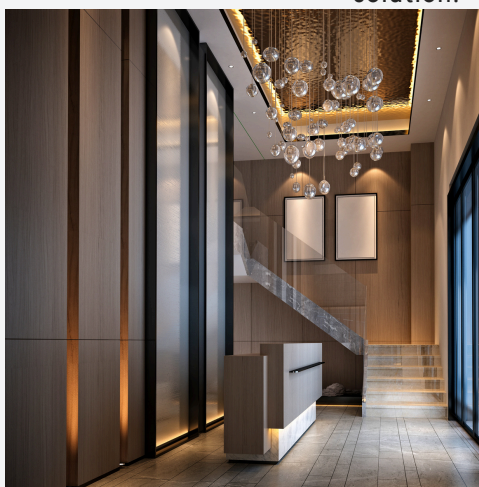
## LIGHTING SYSTEM UPGRADES With Scene Lighting Solutions

Following the closure of LEAX in 2008, Karen Bloomfield, who worked at LEAX for over 10 years, formed Scene Lighting Solutions as a way to continue supporting LEAX Lighting installations within the field. We have, over the years, continued to expand our knowledge and expertise, and as a result are able to offer our unique skill set to upgrade any existing lighting scheme or assist with a new installation.

We have experienced a rapid change in technology over the past 15 years where LED lighting has become a revolution within the industry and environment. Unfortunately, this means replacement lamps, spare parts and support for older lighting systems can be tricky to obtain due to component obsolescence caused by ever tightening energy efficiency regulations.

Without the input of a controls specialist, such as SLS, we have seen many attempts over the years that have been undertaken to upgrade lighting without the knowledge and skill set required, which often results in compatibility issues with the existing lighting system installed. This also has a knock-on effect resulting in poor light quality and dimming control issues with visible flickering of lamps. All the above can reflect damage to the installed lighting control system that in turn is very costly to replace.

As an established lighting solutions company, we tailor our approach to every installation with a team of long established ex-LEAX employees, alongside some of the industries best in integrators and electricians, Scene Lighting Solutions are able to offer a 'team approach' in providing the most suitable, cost effective and maintenance free solution.



With upgrading fully or adapting both your home lighting to an alternative lighting control system alongside installing LED lighting (where required), SLS guarantee to provide a unique and tailored solution to your requirements.

We will be with you every step of the way.

For all upgrades we will discuss the operational side of the existing lighting control system. We will review any new requirements or functionality a potential new lighting control system will provide, such as:

1. Incorporating any stand-alone blind/curtains.
2. Include lighting to secondary bedrooms/bathrooms or any areas currently operated via stand-alone switching.
3. An opportunity to change the style of wall/scene plates along with the finish to areas.
4. Whether there are any areas where you would like to add additional wall/scene plates and lighting circuits; we could incorporate these into the existing lighting system network by installing a compatible wireless system. This also applies to any areas where you may wish for the lights to turn off after a set duration or no movement; wireless sensors or a time clock would be installed to operate these.
5. External lighting can also be added onto the existing lighting control network.
6. The opportunity to upgrade your system, bringing you new practical and efficient features, such as full control of all lighting and blinds via an App including Amazon Alexa, Google Home, Apple HomeKit and Sonos Integration.
7. A new lighting system will provide control remotely via an App whilst away from home.



Please Contact Karen Bloomfield at SLS on: 07723 504483 or  
01296 632729 - Email: [scenelightingsolutions@outlook.com](mailto:scenelightingsolutions@outlook.com)  
Website: [www.SceneLightingSolutions.co.uk](http://www.SceneLightingSolutions.co.uk)  
Registered Company Number: 8145125



## LED RETROFIT-LIGHTING

*With Scene Lighting Solutions Ltd*

Furthermore, we will also:

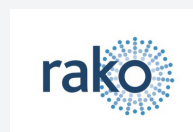
- Review your current lighting along with any new requirements you may have and recommend suitable alternatives or retrofit solutions.
- Demonstrate different LED lamps for comparison of brightness along with colour temperature. This can be achieved by converting an area or a couple of existing halogen lamps over to LED first, within a room, to experience the different dimming capabilities throughout the day.
- Should you wish to replace any of your existing fittings for a different style or finish, we will source any suitable alternatives to be demonstrated prior to making any final decisions.
- All recommendations will take into account any maintenance free solutions and user manageability, which long term will keep the running costs down.
- Throughout the upgrade process, we assign a team consisting of both an Engineer and an Electrician to ensure your lighting system is adjusted within the software, enabling us to accommodate all changes associated with converting your lighting over to LED.



Throughout every installation, our combined team effort will deliver a truly smooth transition over to LED lighting with minimal disturbance, ensuring the following:

- All recommended LEDs will be compatible with your existing lighting control system. For older lighting systems, that may function on incompatible technology, suggestions will be made for the cheapest and most convenient route to adapt or upgrade your system to suit LED lighting.
- Software changes will be made within the network of your lighting system, to adjust both the dimming curve and pre-set lighting levels to accommodate the newly installed LEDs. This ultimately ensures any urgent changes are carried out during the upgrade process, minimising costs long term.
- Scene changes to adjust the level of brightness, to designated lighting brought on within an existing pre-set scene, can be altered on a room by room basis throughout the duration of the project or upon completion to all areas.
- Any complex locating and removal of pre-existing transformers or light fittings is easily achievable with our combined knowledge and expertise of working within many high-end residential properties.

For more information, please call or email me directly to discuss or arrange a site visit to review your current or future requirements. Thank you.



Please Contact Karen Bloomfield at SLS on: 07723 504483 or  
01296 632729 - Email: [scenelightingsolutions@outlook.com](mailto:scenelightingsolutions@outlook.com)  
Website: [www.SceneLightingSolutions.co.uk](http://www.SceneLightingSolutions.co.uk)  
Registered Company Number: 8145125